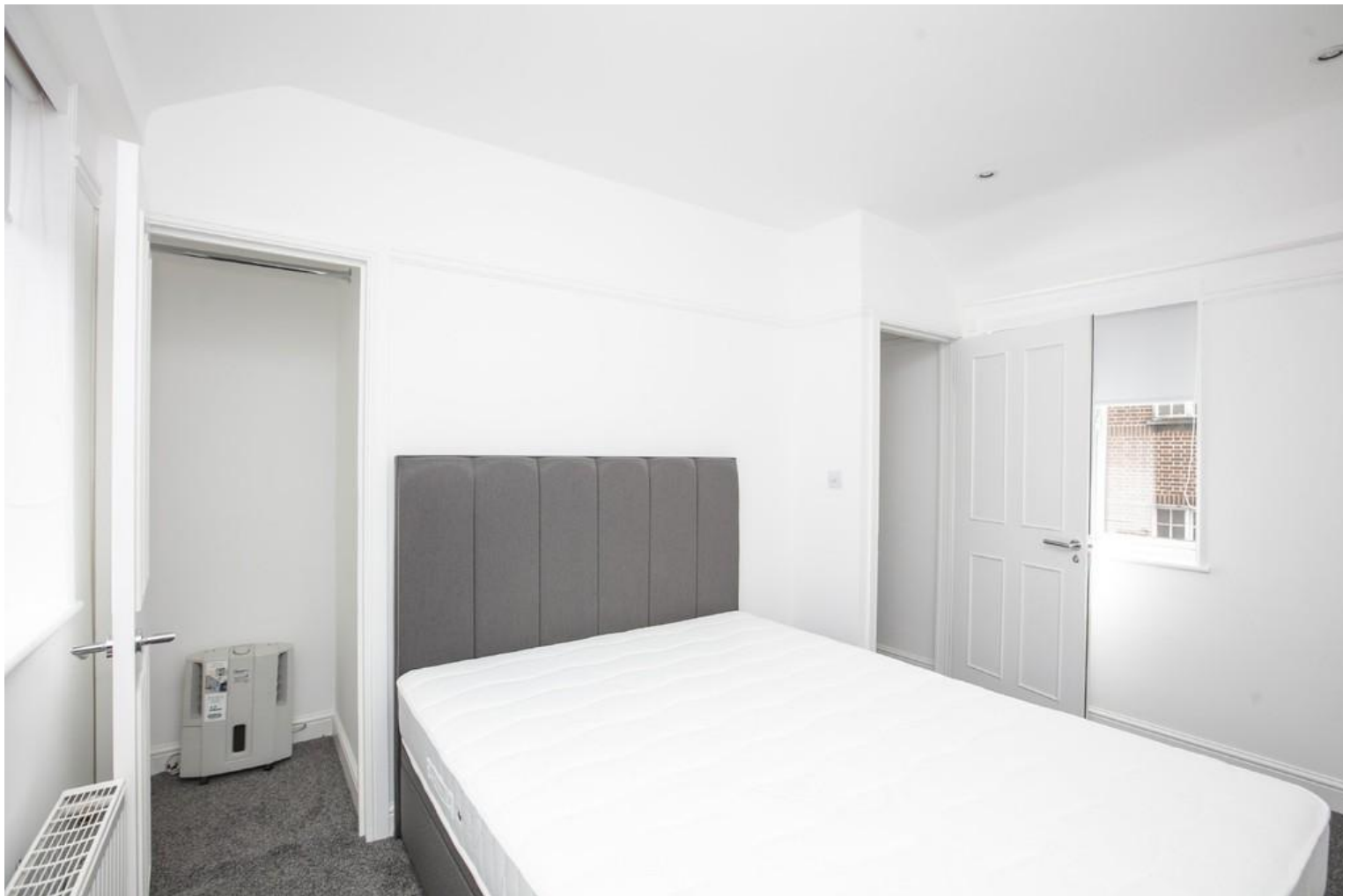




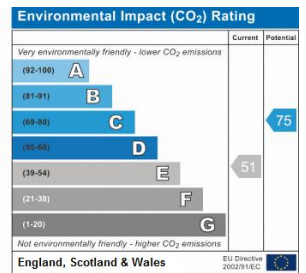
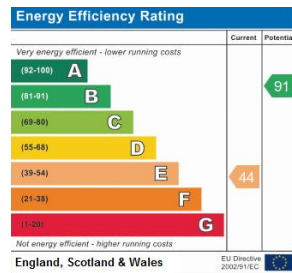
New Church Road | London | SE5 7JH

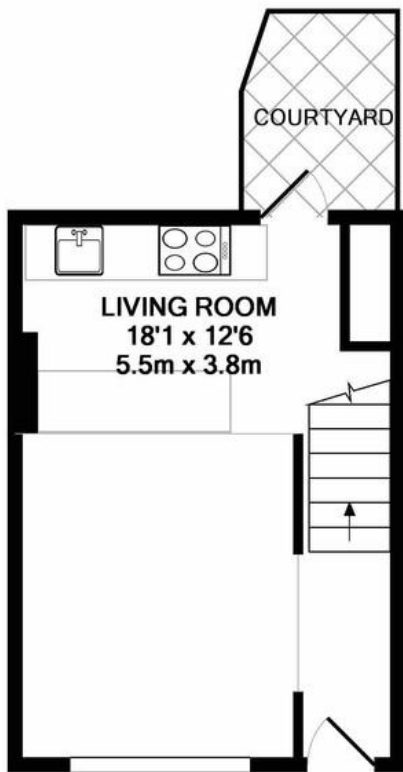
£1,600 pcm

- Mid terraced house
- Two double bedrooms
- Newly renovated
- Three storeys
- Courtyard garden
- Fitted wardrobes
- New kitchen and bathroom
- Close to Burgess Park
- Available now
- Unfurnished or flexible

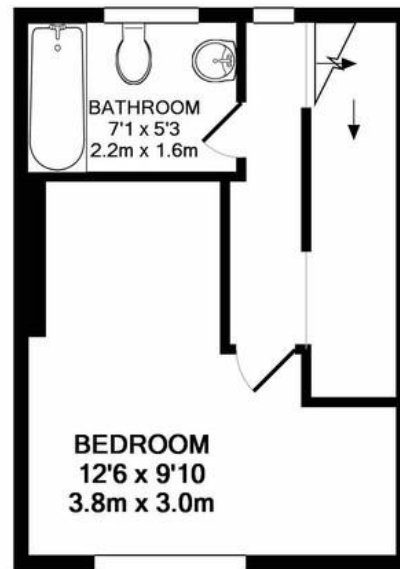


Two double bedroom, mid terrace Victorian house with courtyard garden. Well presented and recently refurbished throughout with modern kitchen and bathroom. Arranged over three floors, with kitchen and lounge on the ground floor, with access to the courtyard garden (ideal for storing bikes). Double bedroom and bathroom on first floor and further double bedroom on the top floor. Well designed with fitted wardrobes and modern finished. Located very close to Burgess Park, with easy access to the City and West end via Elephant and Castle and Oval tubes are within reasonable walking distance. Available now, flexible furnishing.

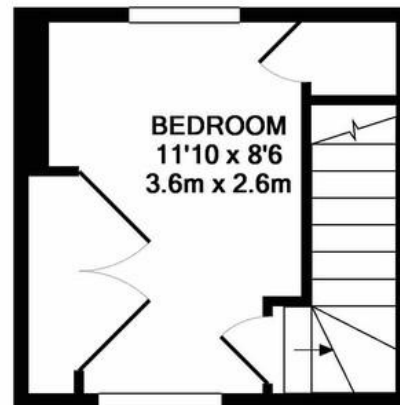




GROUND FLOOR
APPROX. FLOOR
AREA 216 SQ.FT.
(20.1 SQ.M.)



1ST FLOOR
APPROX. FLOOR
AREA 215 SQ.FT.
(19.9 SQ.M.)



2ND FLOOR
APPROX. FLOOR
AREA 150 SQ.FT.
(13.9 SQ.M.)

TOTAL APPROX. FLOOR AREA 581 SQ.FT. (54.0 SQ.M.)

An attempt has been made to ensure the accuracy of the floor plan contained here, measurements of rooms and any other items are approximate and no responsibility is taken for any error, mis-statement. This plan is for illustrative purposes only and should be used as such by any purchaser. The services, systems and appliances shown have not been tested and no guarantee as to their operability or efficiency can be given

Made with Metropix ©2018

Viewing Arrangements

Strictly by appointment

Contact Details

121 Denmark Hill

London

SE5 8EN

www.urbanvillagehomes.co.uk

lettings@urbanvillagehomes.com

020 3519 9121

Agents Note: Whilst every care has been taken to prepare these sales particulars, they are for guidance purposes only. All measurements are approximate and are for general guidance purposes only and whilst every care has been taken to ensure their accuracy, they should not be relied upon and potential buyers are advised to recheck the measurements