



53 Ruskin Walk | London | SE24 9NA

Freehold

£1,550,000

- Five bedroom property.
- Edwardian
- Period features
- Downstairs shower room
- 0.7 miles from Herne Hill Station
- 0.7 miles from North Dulwich Station
- Private garden
- Close proximity to Brockwell Park
- Available end of chain
- Plenty of storage

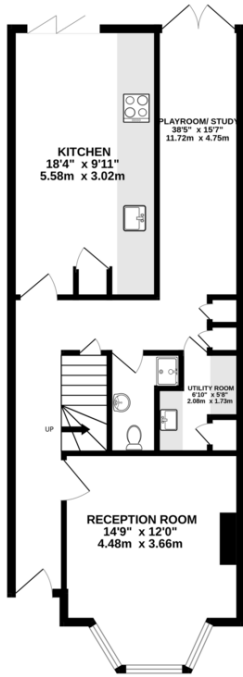


A spacious 5 bedroom terraced home located in the highly desired area between Herne Hill and North Dulwich is available to view now! The original period features of this lovely Edwardian home such as bright bay windows and fire place is well balanced with a modern kitchen and fresh décor. The ground floor of this property consists of a kitchen, living room, utility room and shower room. There are double doors that lead out to the private garden. On the first floor there is the family bathroom and 3 double bedrooms, the largest benefitting from bay windows and built in storage. Two further bedrooms are located on the top floor along with another bathroom and more build in storage.

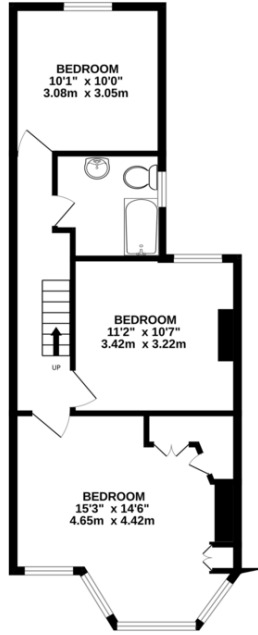


%epcGraph\_c\_1\_300%

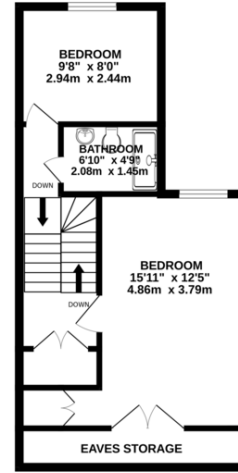
GROUND FLOOR  
640 sq.ft. (59.4 sq.m.) approx.



1ST FLOOR  
520 sq.ft. (48.3 sq.m.) approx.



2ND FLOOR  
407 sq.ft. (37.8 sq.m.) approx.



5 BEDROOM HOUSE

TOTAL FLOOR AREA: 1567 sq.ft. (145.5 sq.m.) approx.

Whilst every attempt has been made to ensure the accuracy of the floorplan contained here, measurements of doors, windows, rooms and any other items are approximate and no responsibility is taken for any error, omission or mis-statement. This plan is for illustrative purposes only and should be used as such by any prospective purchaser. The services, systems and appliances shown have not been tested and no guarantee as to their operability or efficiency can be given.  
Made with Metropix ©2024



## Viewing Arrangements

Strictly by appointment

## Contact Details

121 Denmark Hill

London

SE5 8EN

[www.urbanvillagehomes.co.uk](http://www.urbanvillagehomes.co.uk)

[sales@urbanvillagehomes.com](mailto:sales@urbanvillagehomes.com)

020 3519 9121

Agents Note: Whilst every care has been taken to prepare these sales particulars, they are for guidance purposes only. All measurements are approximate and for general guidance purposes only and whilst every care has been taken to ensure their accuracy, they should not be relied upon and potential buyers are advised to recheck the measurements