



Champion Grove | London | SE5

£1,650 pcm

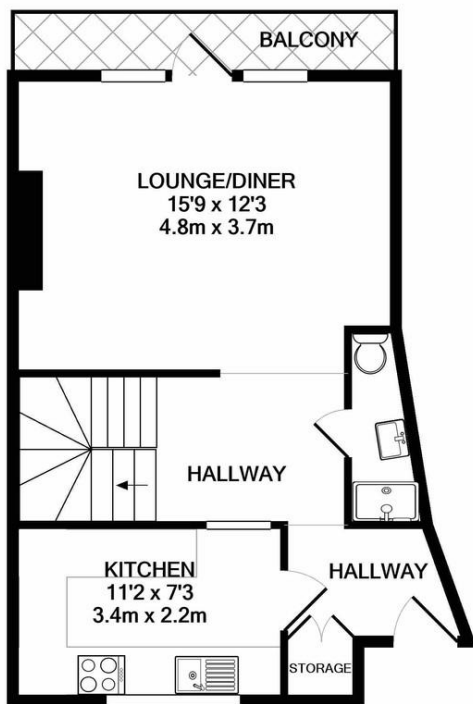
- Two Large Double Bedrooms
- Two bathrooms
- Private Balcony
- Kitchen Breakfast bar
- Bike storage
- Kings College Hospital
- Denmark Hill Station
- East Dulwich shops
- Ruskin Park
- Available immediately



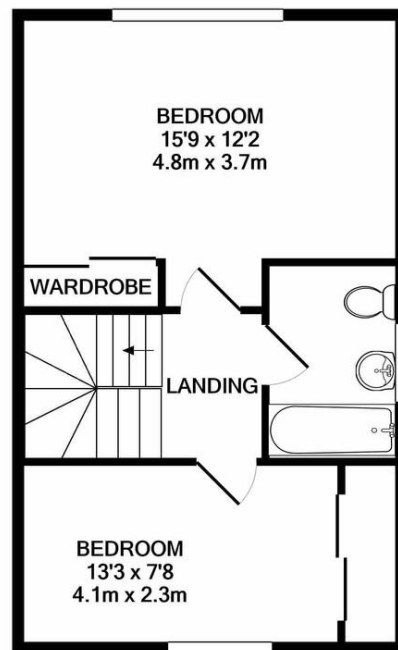
A pretty two bedroom two bathroom split level property in the highly sought area of Denmark Hill, just off Grove Lane, with balcony and bike store. The kitchen is fitted with modern appliances, granite worktop, breakfast bar and serving hatch. Downstairs is an open plan reception and bathroom.. Upstairs has two large double bedrooms with fitted wardrobes and a family bathroom. All windows and French doors are double glazed with security locks. Walking distance to Denmark Hill, Kings College Hospital, Camberwell shops, bars and restaurants as well as Lordship Lane and Peckham Rye.



%epcGraph_c_1_300%



GROUND FLOOR
APPROX. FLOOR
AREA 410 SQ.FT.
(38.1 SQ.M.)



1ST FLOOR
APPROX. FLOOR
AREA 410 SQ.FT.
(38.1 SQ.M.)

TOTAL APPROX. FLOOR AREA 820 SQ.FT. (76.2 SQ.M.)

Whilst every attempt has been made to ensure the accuracy of the floor plan contained here, measurements of doors, windows, rooms and any other items are approximate and no responsibility is taken for any error, omission, or mis-statement. This plan is for illustrative purposes only and should be used as such by any prospective purchaser. The services, systems and appliances shown have not been tested and no guarantee as to their operability or efficiency can be given
Made with Metropix ©2020

Viewing Arrangements

Strictly by appointment

Contact Details

121 Denmark Hill

London

SE5 8EN

www.urbanvillagehomes.co.uk

lettings@urbanvillagehomes.com

020 3519 9121

Agents Note: Whilst every care has been taken to prepare these sales particulars, they are for guidance purposes only. All measurements are approximate are for general guidance purposes only and whilst every care has been taken to ensure their accuracy, they should not be relied upon and potential buyers are advised to recheck the measurements