

## Dog Kennel Hill | London | SE22

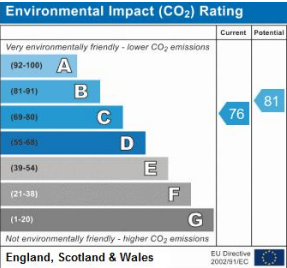
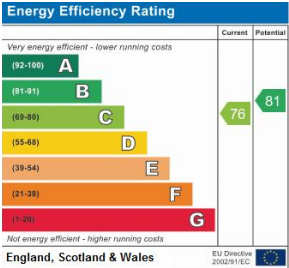
£1,700 pcm

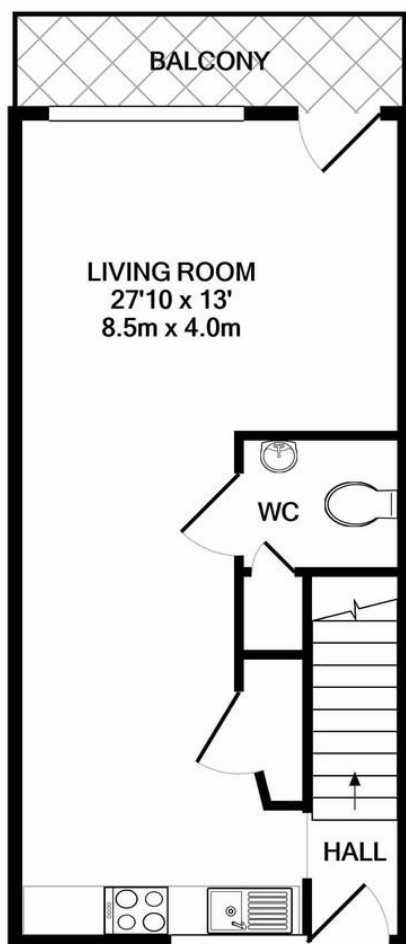
- Two Bedroom
- Split level
- Modern Design
- 2 Balconies
- Mezzanine
- Denmark Hill Station
- East Dulwich Station
- Lordship Lane
- Peckham
- Camberwell



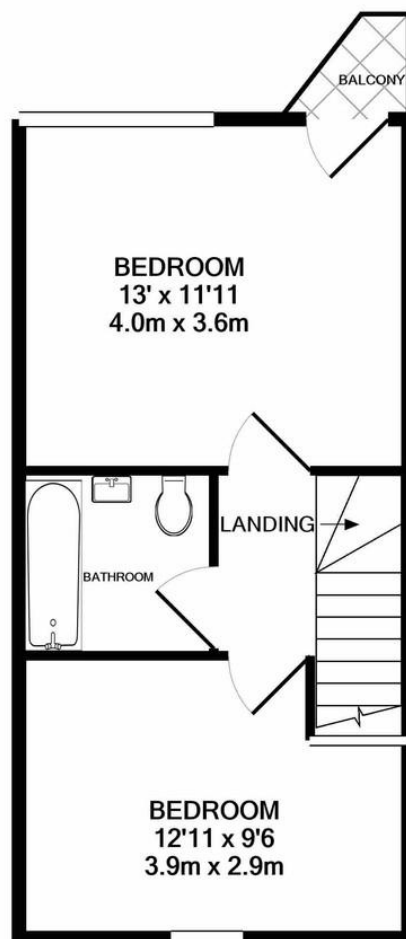
Stylish two bedroom eco-apartment in this award winning, architecturally designed building. The flat is split over two floors. Downstairs there is a spacious open plan kitchen and reception room and a WC. A balcony stretches the whole width of the property and is accessed via the living area. Upstairs there are two bedrooms, one of which is a mezzanine with an additional small balcony There is ( optional )secure gated car parking, cycle storage and a passenger lift to all floors. Walking distance to Denmark Hill and East Dulwich station, shops and restaurants nearby.







GROUND FLOOR  
APPROX. FLOOR  
AREA 366 SQ.FT.  
(34.0 SQ.M.)



1ST FLOOR  
APPROX. FLOOR  
AREA 362 SQ.FT.  
(33.6 SQ.M.)

TOTAL APPROX. FLOOR AREA 729 SQ.FT. (67.7 SQ.M.)

Whilst every attempt has been made to ensure the accuracy of the floor plan contained here, measurements of doors, windows, rooms and any other items are approximate and no responsibility is taken for any error, omission, or mis-statement. This plan is for illustrative purposes only and should be used as such by any prospective purchaser. The services, systems and appliances shown have not been tested and no guarantee as to their operability or efficiency can be given

Made with Metropix ©2021

## Viewing Arrangements

Strictly by appointment

## Contact Details

121 Denmark Hill

London

SE5 8EN

[www.urbanvillagehomes.co.uk](http://www.urbanvillagehomes.co.uk)

[lettings@urbanvillagehomes.com](mailto:lettings@urbanvillagehomes.com)

020 3519 9121

Agents Note: Whilst every care has been taken to prepare these sales particulars, they are for guidance purposes only. All measurements are approximate are for general guidance purposes only and whilst every care has been taken to ensure their accuracy, they should not be relied upon and potential buyers are advised to recheck the measurements