



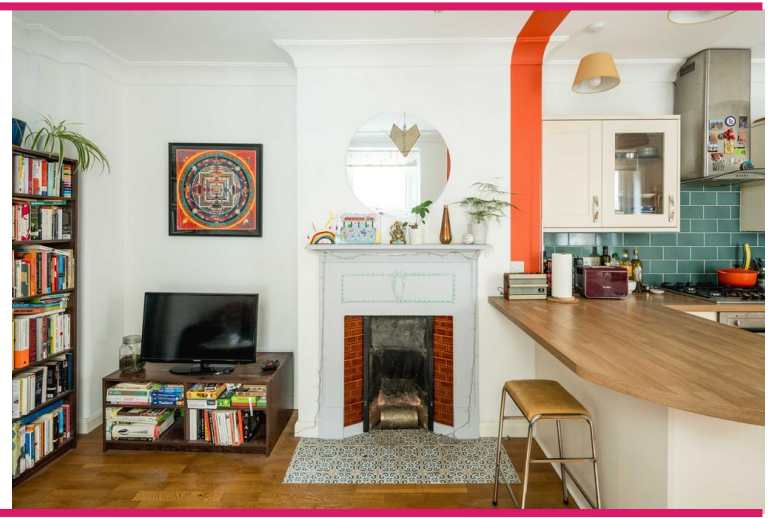
Northlands Street | London | SE5

Share of Freehold

£450,000


- Two double bedrooms
- First floor
- Open plan
- Modern Kitchen
- Family bathroom
- Double glazing
- Denmark Hill Station
- Loughborough Junction
- Ruskin Park
- Excellent bus routes



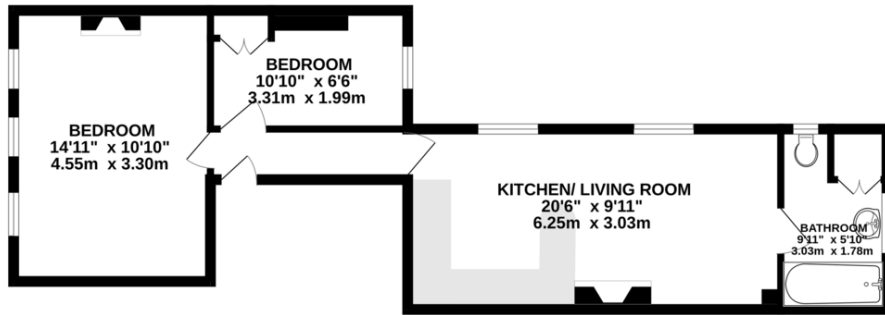


Two bedroom, first floor Victorian apartment on a residential street with excellent transport links. Well maintained by the current owner this flat has an open plan kitchen and reception room, modern bathroom and two good sized bedrooms both with fitted wardrobes. The master bedroom is at the front and spans the width of the house. Great location for popular Brixton Village, shops bars, restaurants and tube, Loughborough Junction, Denmark Hill, Ruskin Park, Kings College Hospital and Camberwell.



Energy Efficiency Rating		
	Current	Potential
<i>Very energy efficient - lower running costs</i>		
(92+) <b>A</b>		
(81-91) <b>B</b>		
(69-80) <b>C</b>	78	82
(55-68) <b>D</b>		
(39-54) <b>E</b>		
(21-38) <b>F</b>		
(1-20) <b>G</b>		
<i>Not energy efficient - higher running costs</i>		
<b>England &amp; Wales</b>	EU Directive 	

FIRST FLOOR  
511 sq.ft. (47.5 sq.m.) approx.



TOTAL FLOOR AREA: 511 sq.ft. (47.5 sq.m.) approx.

Whilst every attempt has been made to ensure the accuracy of the floorplan contained here, measurements of doors, windows, rooms and any other items are approximate and no responsibility is taken for any error, omission or mis-statement. This plan is for illustrative purposes only and should be used as such by any prospective purchaser. The services, systems and appliances shown have not been tested and no guarantee as to their operability or efficiency can be given.  
Made with Metropix ©2025

## Viewing Arrangements

Strictly by appointment

## Contact Details

121 Denmark Hill

London

SE5 8EN

[www.urbanvillagehomes.co.uk](http://www.urbanvillagehomes.co.uk)

[sales@urbanvillagehomes.com](mailto:sales@urbanvillagehomes.com)

020 3519 9121

Agents Note: Whilst every care has been taken to prepare these sales particulars, they are for guidance purposes only. All measurements are approximate and for general guidance purposes only and whilst every care has been taken to ensure their accuracy, they should not be relied upon and potential buyers are advised to recheck the measurements