

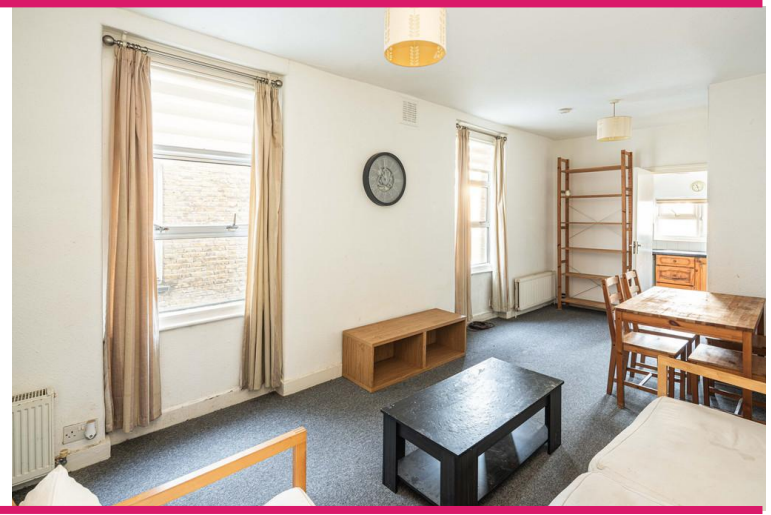


26 Northlands Street | London | SE5  
9PL

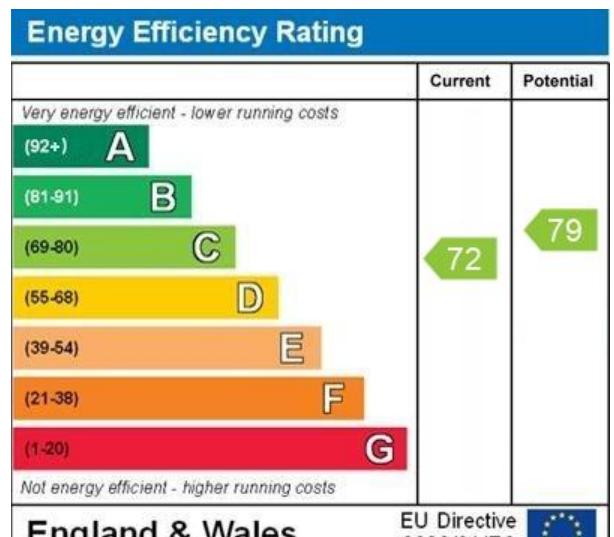
Leasehold

£315,000

- One double bedroom
- First floor
- Chain free
- renovation potential
- Excellent local amenities
- Loughborough Junction
- Brixton Tube
- Kings College Hospital
- Ruskin Park
- Excellent bus routes



One bedroom, first floor Victorian apartment on a residential street with excellent transport links. Well maintained by the current owner this flat has an open plan kitchen and reception room, modern bathroom and two good sized bedrooms. Great location for popular Brixton Village, shops bars, restaurants and tube, Loughborough Junction, Denmark Hill, Ruskin Park, Kings College Hospital and Camberwell. Chain free, share of freehold



150 sq ft (14.0 sq m) approx.



150 sq ft (14.0 sq m) approx.

## Viewing Arrangements

Strictly by appointment

## Contact Details

121 Denmark Hill

London

SE5 8EN

[www.urbanvillagehomes.co.uk](http://www.urbanvillagehomes.co.uk)

[sales@urbanvillagehomes.com](mailto:sales@urbanvillagehomes.com)

020 3519 9121

Agents Note: Whilst every care has been taken to prepare these sales particulars, they are for guidance purposes only. All measurements are approximate are for general guidance purposes only and whilst every care has been taken to ensure their accuracy, they should not be relied upon and potential buyers are advised to recheck the measurements