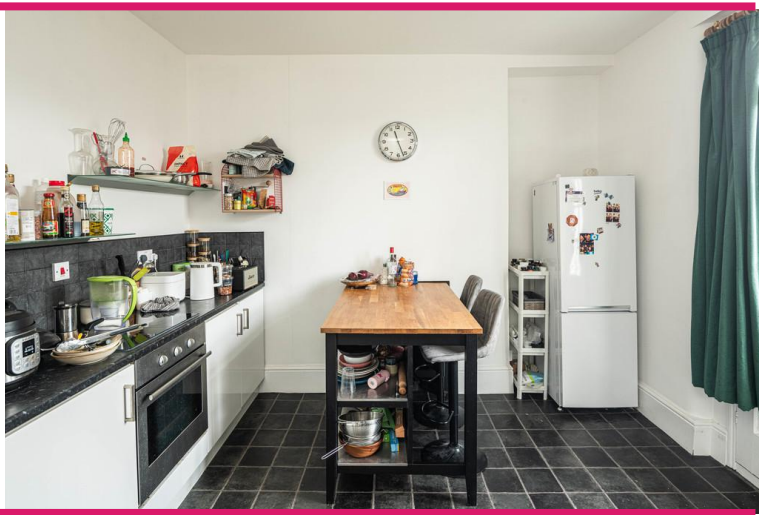




Camberwell Grove | London | SE5

£2,250 pcm

- One double
- One single bedroom / office
- Private balcony
- Period features
- Separate Kitchen / Living room
- Local amenities
- Denmark Hill Station
- Excellent bus routes
- East Dulwich train station
- Kings College Hospital



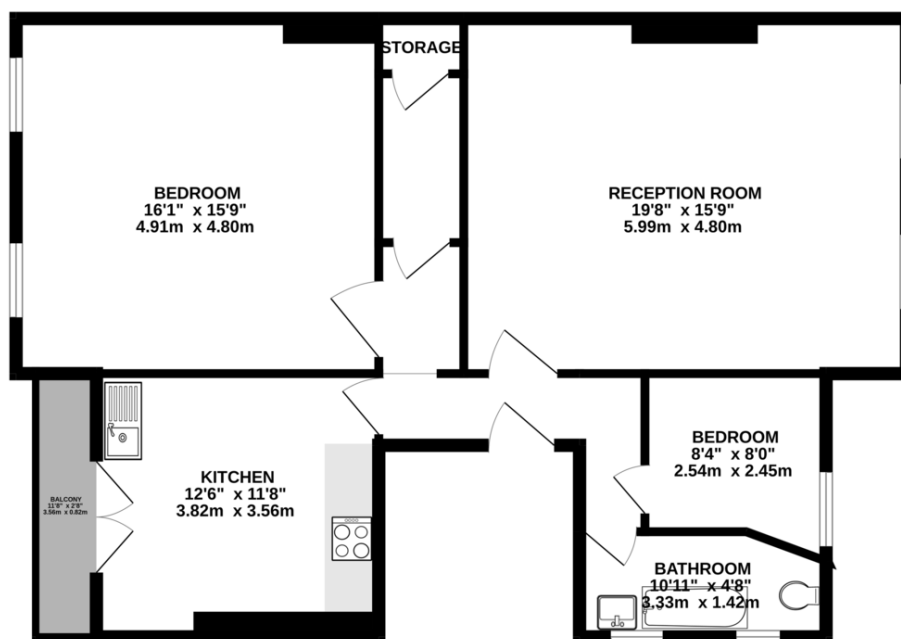
Beautiful second floor period apartment with private balcony, set within an attractive period property, this spacious apartment offers character, charm, and generous living space throughout. The property features a large double bedroom complete with sash windows and a striking feature fireplace, along with a walk-in wardrobe. There is also a versatile office or single bedroom, ideal for home working. The apartment boasts a huge reception room, perfect for entertaining, a bright eat-in kitchen, a private balcony, and a three piece bathroom. Many original period features have been retained, adding warmth and timeless appeal.

Ideally located close to Denmark Hill, King's College Hospital, and East Dulwich train station, with Peckham Rye, Lordship



%epcGraph_c_1_300%

SECOND FLOOR
1023 sq.ft. (95.0 sq.m.) approx.



TOTAL FLOOR AREA : 1023sq.ft. (95.0 sq.m.) approx.

Whilst every attempt has been made to ensure the accuracy of the floorplan contained here, measurements of doors, windows, rooms and any other items are approximate and no responsibility is taken for any error, omission or mis-statement. This plan is for illustrative purposes only and should be used as such by any prospective purchaser. The services, systems and appliances shown have not been tested and no guarantee as to their operability or efficiency can be given.
Made with Metropix ©2025

Viewing Arrangements

Strictly by appointment

Contact Details

121 Denmark Hill

London

SE5 8EN

www.urbanvillagehomes.co.uk

lettings@urbanvillagehomes.com

020 3519 9121

Agents Note: Whilst every care has been taken to prepare these sales particulars, they are for guidance purposes only. All measurements are approximate are for general guidance purposes only and whilst every care has been taken to ensure their accuracy, they should not be relied upon and potential buyers are advised to recheck the measurements